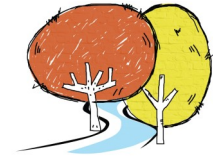


# 2023 Annual Fee Schedule



**SOUTHSIDE**  
Montessori School

- Est 1979 -

2023 Schedule of fees	Annual	Per term	One-off payments	Fee Description
Tuition fees – per student				
Tuition fees are invoiced at the commencement of each term and payable by the end of the third week of each term.				
Preschool and Primary students	\$10 600	\$2650		The 2023 tuition fee includes a contribution towards incursions/ excursions, formally known as the Program levy. Please note: an additional charge for camps will be payable
Preparatory - 3 Day program	\$8,080	\$2,020		
Preparatory - 5 Day program	\$11,200	\$2,800		
Community Contribution levy	\$400	\$100		As a not-for-profit community school, families are asked to contribute their skills, expertise or time to enriching the school's extra-curricular programs and ensuring the school's sustainability. This contribution involves active participation (eg. working bees, events, specific jobs). Families who do not wish to participate may opt to pay a nominal fee of \$100 per term.  *Charged per family.
<b>Enrolment Fees</b>				
Application fee			\$250	A non-refundable Application Fee charged to all prospective students applying for a place. The Application Fee covers the administrative cost of applicants. Payment does not guarantee an offer of place.
Placement fee			\$800	A non-refundable Placement Fee is required to confirm acceptance of placement. This is due 90 days within receipt of the offer of place or on the student's first day of school – whichever occurs sooner.
Membership Fee			\$95	An annual fee of \$95 per family is payable for membership to the Southside Montessori Society.

T +61 2 9533 1229 | E [office@southsidemontessori.edu.au](mailto:office@southsidemontessori.edu.au)

A 35 Lillian Road, Riverwood 2210 | PO Box 900 Riverwood NSW 2210

W [southsidemontessori.edu.au](http://southsidemontessori.edu.au)

Other Fees and Charges		
Future Development Fund	\$200 annually	The school operates a Future Development Fund, incorporating ongoing infrastructure, maintenance, and development. Voluntary contributions of \$2 or more are tax-deductible and a receipt will be provided by 30 June each year.
Card Transaction Fee	1%	All credit card transactions attract a 1% surcharge
Late payment Fee	\$100	The school reserves the right to charge a late payment fee for all overdue accounts
Withdrawal		The School requires at least one full term's written notice of termination. In lieu of notice, one full term's tuition fees will be charged. The notice must be given no later than the day before the first day of student attendance of the last term of enrolment.

Discounts		
Early bird discount	5%	Early bird discount will apply for full payment of the year's tuition fees before the end of the third week, Term 1.
Family rebates	The sibling rebate applies to any families who have another child currently attending Preschool or Primary School at Southside Montessori School.	

Family rebates	2 <sup>nd</sup> child	3 <sup>rd</sup> child	4 <sup>th</sup> child
Tuition discount	20%	30%	50%

	Tuition fee due date	Early Bird discount applicable
Term 1	Friday 17 <sup>th</sup> February	Before Friday 17 <sup>th</sup> February
Term 2	Friday 12 <sup>th</sup> May	
Term 3	Friday 4 <sup>th</sup> August	
Term 4	Friday 27 <sup>th</sup> October	

**Payment methods:**

Credit Card

Electronic Funds Transfer

\*Please use your family name as the reference description.

\*\*Typically, Independent School Fees increase annually and are adjusted each calendar year.

T +61 2 9533 1229 | E [office@southsidemontessori.edu.au](mailto:office@southsidemontessori.edu.au)  
 A 35 Lillian Road, Riverwood 2210 | PO Box 900 Riverwood NSW 2210  
 W [southsidemontessori.edu.au](http://southsidemontessori.edu.au)

